

Important Cultural Asset Old Sasebo Wireless Transmission Facility (Hario Transmitting Station)



Fig.1 Old Sasebo Wireless Transmission Facility

The Imperial Japanese Navy began construction of this facility in 1918 and completed in 1922.

The Russo-Japanese War triggered a need for the strengthening of wireless communication, and it was constructed 1,550,000 yen(current value is about 25,000 million yen)in total. 300,000 yen(current value is about 5,000 million yen)was spent on each wireless tower..

Three ferro-concrete towers in the facility stand at 446 feet. They were constructed like chimney with the bottoms which were 39 feet in diameter.

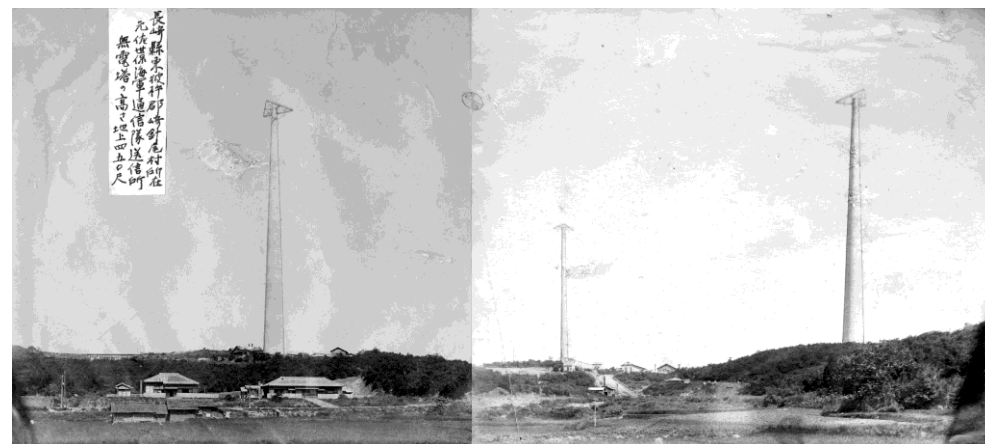


Fig.2 A panoramic view of the wireless towers right after completion

It is famous as the facility which transmitted the code “Climb Mount Niitaka 1208” to order an attack on Pearl Harbor. There are no materials regarding it and it is not clear if it really transmitted the code.

The wireless towers were located on a regular triangle with 984 feet each side, and the ferro-concrete transmission facility called the transmission room was constructed in the middle. It is a huge semi subterranean two-storied building with 13,520 square feet in floor space.

Additionally, building structures such as an oil warehouse, a water tank, a watch house, a site of barracks and harbor facilities are left in and out of this

By recent studies, this facility was prized for its engineering art and wireless technology along with its historical background. And it was designated for the important cultural asset as the modern heritage which symbolizes development of technology in Japan

【Tour information】

Please make sure to contact : Social Education Division

Sasebo City Board of Education

Phone (0956)24-1111

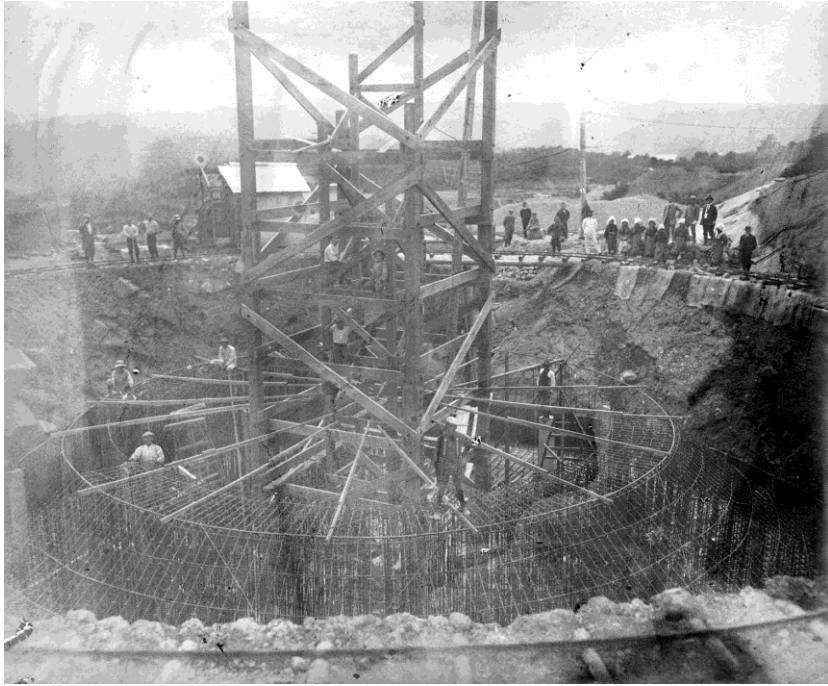


Fig.3 A picture of the wireless tower under construction



Fig.5 The current transmission room



Fig.4 Inside of wireless tower



Fig.6 A picture of the transmission room under construction